



Electric Steam Bath Boilers

> Homes > Cottages > Clubs > Hotels



Why & Where - Alladin-Air

Only in recent years has the age old concept of health care through steam bathing been made possible in the **privacy** of one's own home, hotel room or cottage.

Besides the exhilarating effects of temperature and temperature changes, the steam moistens the respiratory tract and cleanses the skin. Especially in dry climates where good humidification is hard to find, your morning Alladin-Air steam bath will give you that head start you need to face the day.

Before a night out Alladin-Air steam will reduce

the day's tensions, both mental and physical, and give you that feeling of well being.

Before retiring, a steam bath followed by a warm shower induces the kind of sleep you 'dream about'.

Whenever moist heat therapy is recommended, Alladin-Air steam can relieve minor aches and pains of sinus, arthritis, colds, rheumatism and plain sore muscles.

And even the 'life of the party' can look to Alladin-Air steam to relieve dehydration and salvage the day after.

GUIDE TO UNIT SELECTION **

REQUIRED CAPACITY KW	1.5	2.0	3.0	4.0	5.0	7.0	8.0	10.0
MAX. ROOM VOLUME CUBIC FEET	60	80	120	160	200	250	300	400

** BASED ON ROOM WARM UP TIME OF 30 MIN. AND LIGHTWEIGHT WALL SECTIONS.

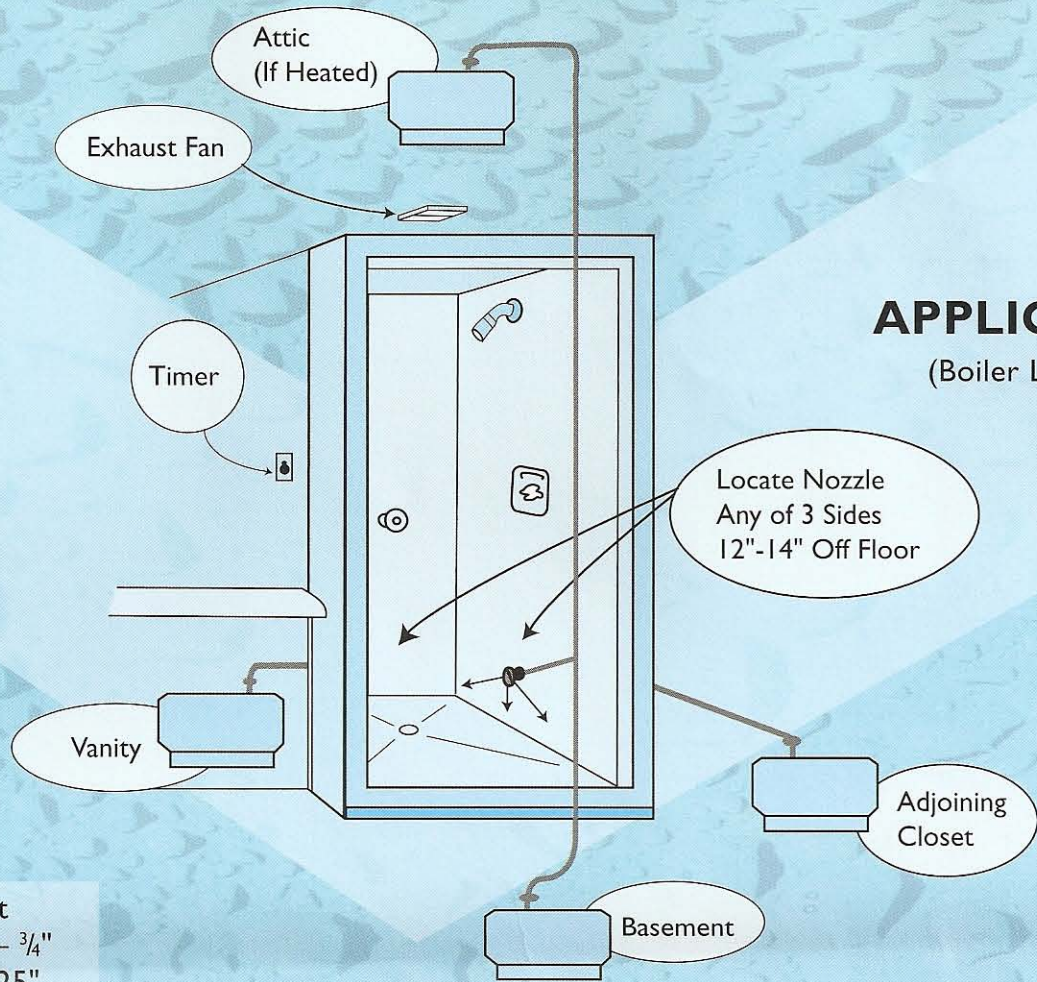
IMPORTANT: The above guide should be considered as **minimum** capacity requirements for the room sizes shown. For heavy wall section such as ceramic tile on cement grout and/or faster warm up time, unit size should be increased by one or sometimes two sizes. Contact manufacturer or distributor for special cases.

CAPACITY TABLE SERIES SFL

INPUT KW	MODEL NO.			CAPACITY		AMPS-I PH-60 CY.		
	115 Volt	208 Volt	230 Volt	lbs/hr	kgs/hr	115V	208V	230V
1.5	SFL-1X5M1			4.5	2.1	13.0		
2.0	SFL-2M1	SFL-2M8	SFL-2M2	6.0	2.7	17.4	9.6	8.7
3.0		SFL-3M8	SFL-3M2	9.0	4.1		14.4	13.0
4.0		SFL-4M8	SFL-4M2	12.0	5.5		19.2	17.4
5.0		SFL-5M8	SFL-5M2	15.0	6.8		24.0	21.7

DOUBLE CIRCUITED SERIES

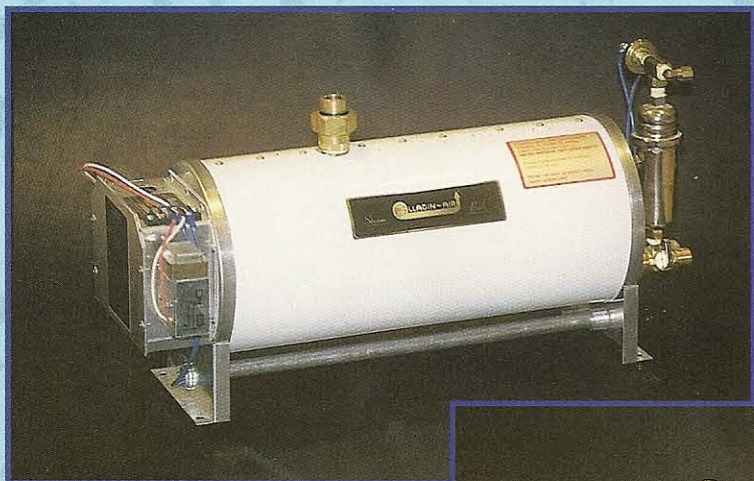
6.0		SFL-2E-3M8	SFL-2E-3M2	18.0	8.2		28.8	26.0
7.0		SFL-2E-3/4M8	SFL-2E-3/4M2	21.0	9.6		33.6	30.4
8.0		SFL-2E-4M8	SFL-2E-4M2	24.0	11.0		38.4	34.8
9.0		SFL-2E-4/5M8	SFL-2E-4/5M2	27.0	12.3		43.2	39.1
10.0		SFL-2E-5M8	SFL-2E-5M2	30.0	13.6		48.0	43.4



APPLICATION

(Boiler Locations)

Steam Outlet
 6 to 10 Kw. - $\frac{3}{4}$ "
 Length - 25"
 Width - 10 $\frac{1}{2}$ "
 Height - 12"



Standard Features

- All stainless Inner Shell
- Low Voltage Controls
- Temperature High Limit
- Feed Water Pressure Switch
- Feed Water Regulator
- 30 Min. Timer
- Injection Nozzle
- Manual Drain

Steam Outlet
 1 to 5 Kw. - $\frac{1}{2}$ "
 Length - 24"
 Width - 8 $\frac{1}{2}$ "
 Height - 12"



Options

- Remote Thermostat
- Additional Nozzles
- Fill Line Strainer
- Auto Flush System

OPERATING PROCEDURE

The owners personal habits, timetable and experience with steam baths will determine to a large extent, it's operation. The basic sequence is as follows:

- a) Turn timer control to full 30 minutes and close steam room door.
- b) After a predetermined warm up time has elapsed turn on area exhaust fan if available to exhaust any steam escaping on entry, reset timer to desired length of bath (10-20 min.) and enter the steam room.
- c) If the installation has a thermostat, it will maintain a comfortable temperature inside. If there is no thermostat, operate the shower periodically to condense some steam and control the temperature.
- d) Unit will shut down automatically after dialed time has elapsed.
- e) Proceed with normal shower; Hot for relaxed retirement and cold for further exhilarated activity.



Electric Steam Bath Boilers

CALGARY, ALBERTA

Guarantee

The manufacturer guarantees this product to be free from defects in parts and workmanship for one year, F.O.B. factory, exclusive of de-scaling requirements. The Manufacturer or his agent, provides this service at a nominal cost, which is considered to be an operating cost.

DISTRIBUTOR

Alladin-Air Manufacturing Ltd.
1111 46th Ave. S.E.
Calgary, Alberta T2G 2A5
Phone: (403) 243-2923
Fax: (403) 287-9005